

TOWN OF
RICHMOND
WASHINGTON COUNTY -- RHODE ISLAND
TAX ASSESSOR'S MAPS
WITH ZONING

Includes TAX MAP REVISIONS through DECEMBER 31, 2010
Includes ZONING AMENDMENTS through SEPTEMBER 7, 2010
*Note: The Zoning Overlay Districts (Agricultural, Aquifer and Flood) are not depicted on these maps.
See "Official Zoning Map" located in Town Clerk's Office.*



Disclaimer: This map is for general assessment purposes only. It is not a legal description, conveyance or product of a Professional Land Survey. Lot areas sourced from Assessor's property database. Wet areas are not legal definitions and approximate only. Zoning information is for general planning purposes only and is not an official record.
Data Sources: (C) 2010 Town of Richmond GIS and RIGIS Wetlands 1998.
Prepared by: Mapping and Planning Services, Jamestown, RI (MH 10/2011)

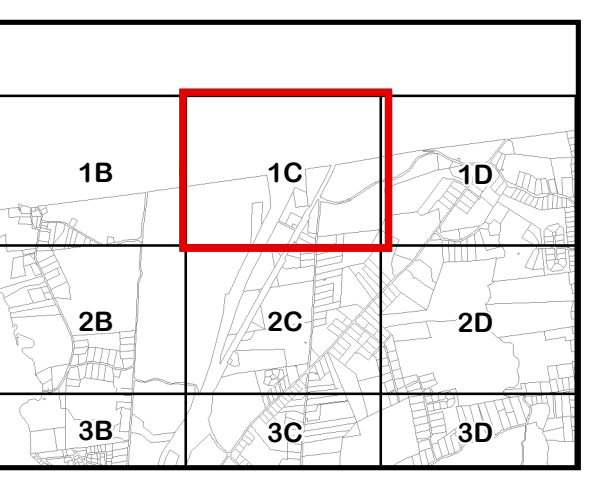
- R-1
- R-2
- R-3
- GB
- NB
- PD
- I
- LI
- PUDVC
- FT

LEGEND

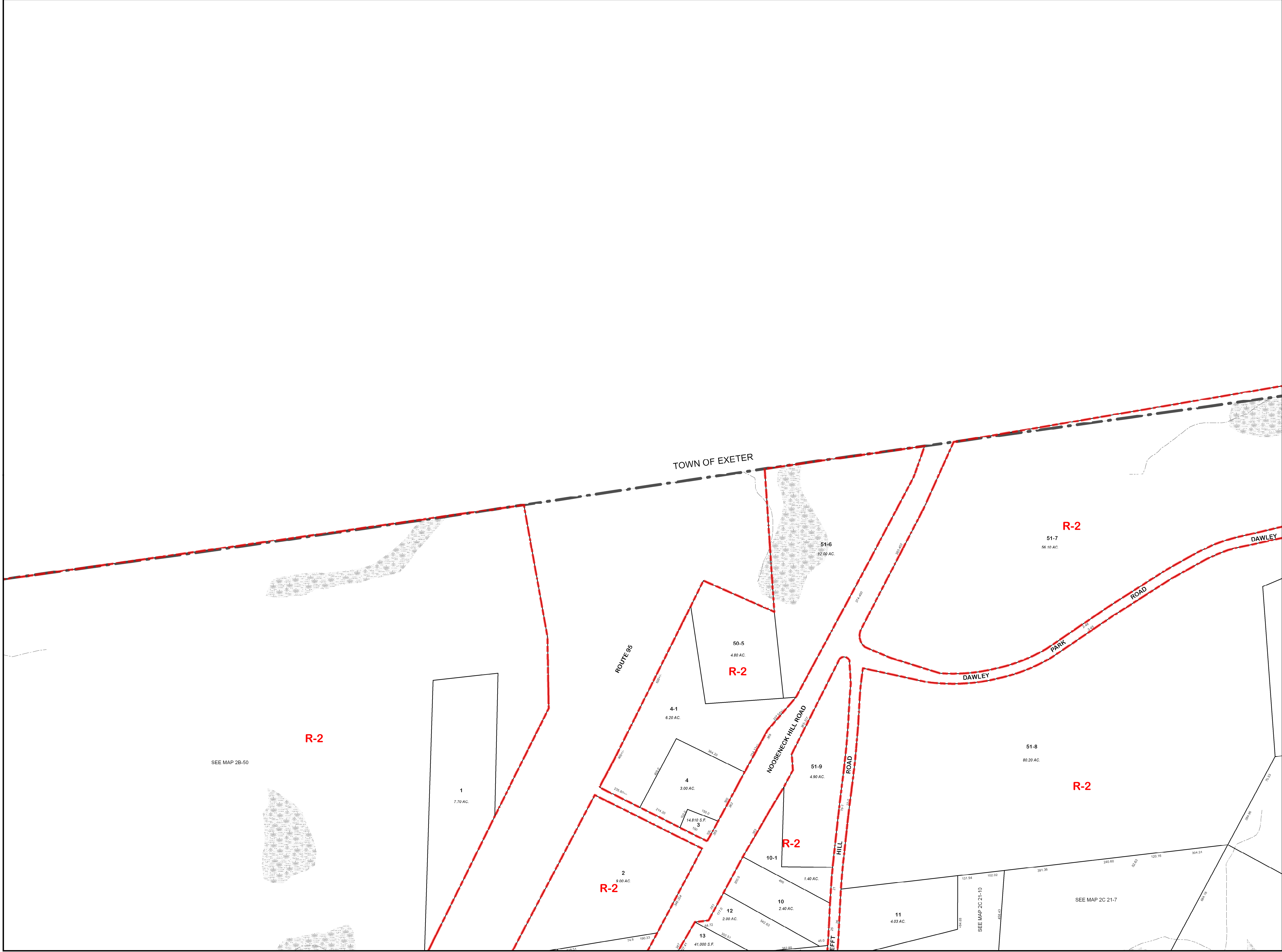
12	ZONING DISTRICT BOUNDARY
RESIDENTIAL, 1 ACRE MINIMUM	
RESIDENTIAL, 2 ACRE MINIMUM	
RESIDENTIAL, 3 ACRE MINIMUM	
GENERAL BUSINESS	
NEIGHBORHOOD BUSINESS	
PLANNED DEVELOPMENT	
INDUSTRIAL	
LIGHT INDUSTRIAL	
PLANNED UNIT DEV'TMENT-- VILLAGE CNTR	
FLEX TECH	

PARCEL NUMBER	12	
STREAM		
POND, OPEN WATER		
WET AREA (not legal)		
RAILROAD		
CEMETERY		
ACRES	57.5 AC.	
SQUARE FEET	20,000 S.F.	
SCALED AREA	P	
DEEDED AREA	D	
TOWN BOUNDARY		

INDEX TO ADJOINING PLATS



PLAT NUMBER
1C



SEE MAP 2B-50

SEE MAP 2C 21-10
SEE MAP 2C 21-7